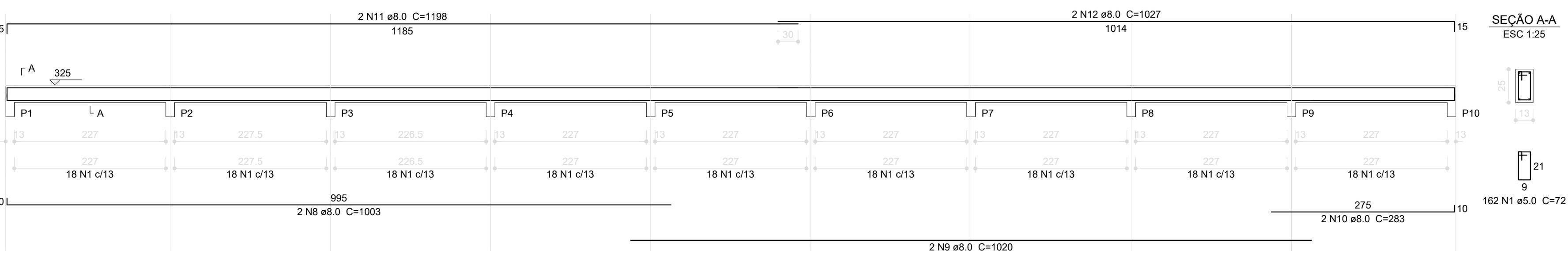


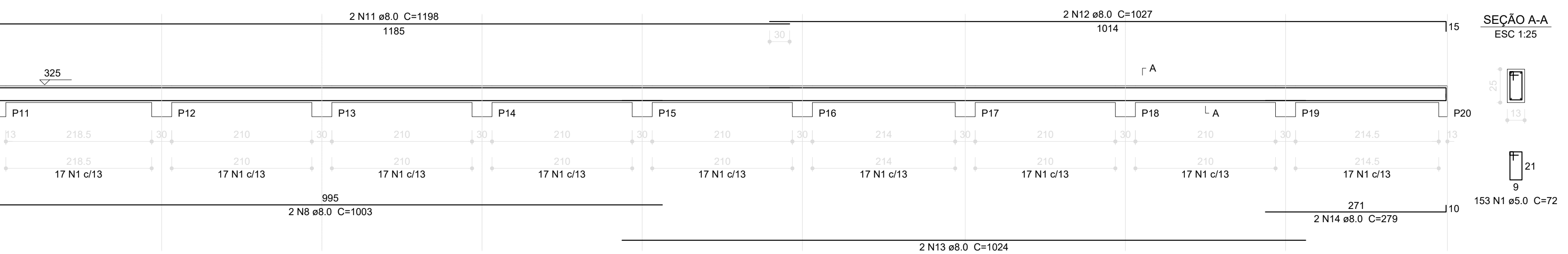
V1

ESC 1:50



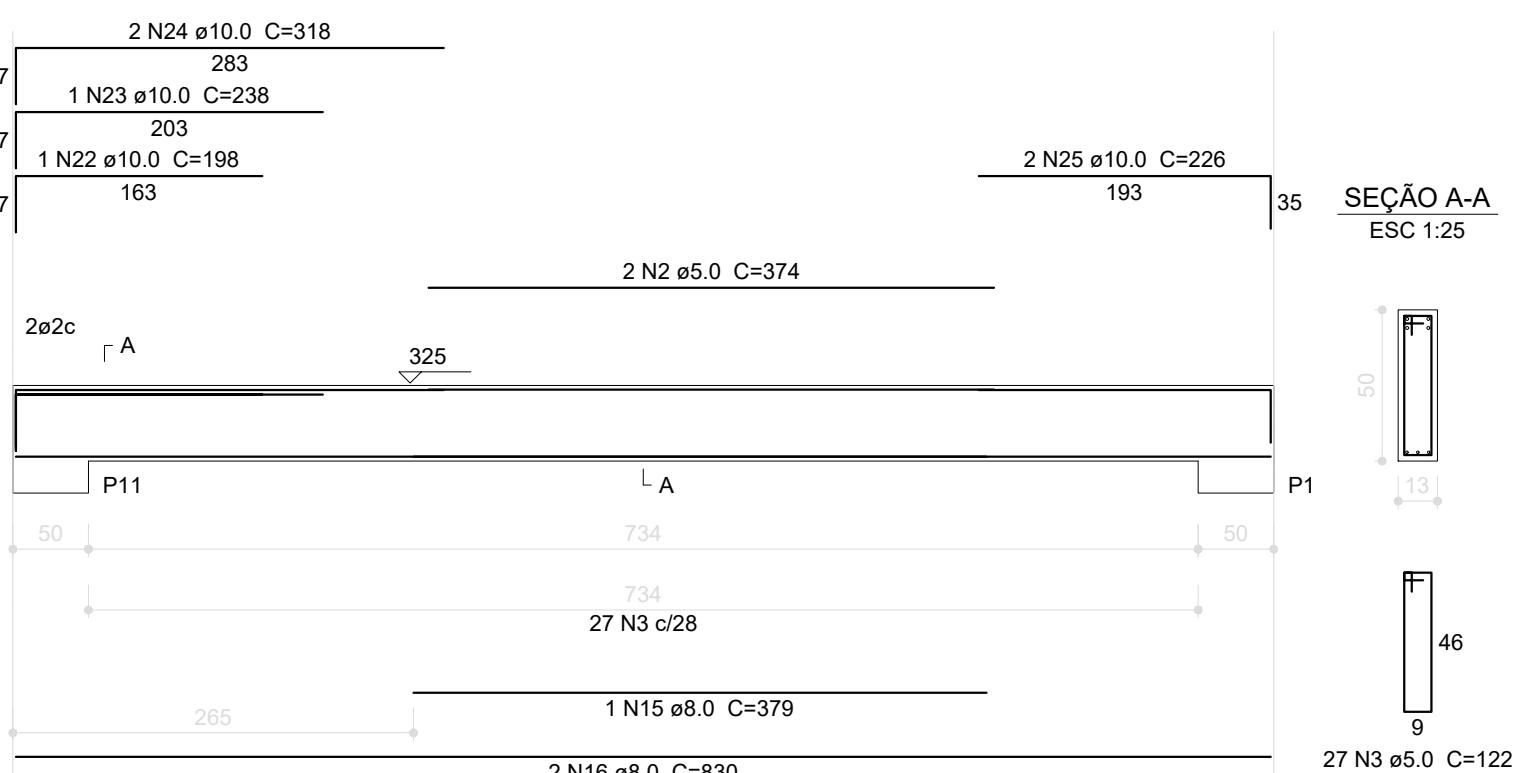
V2

ESC 1:50



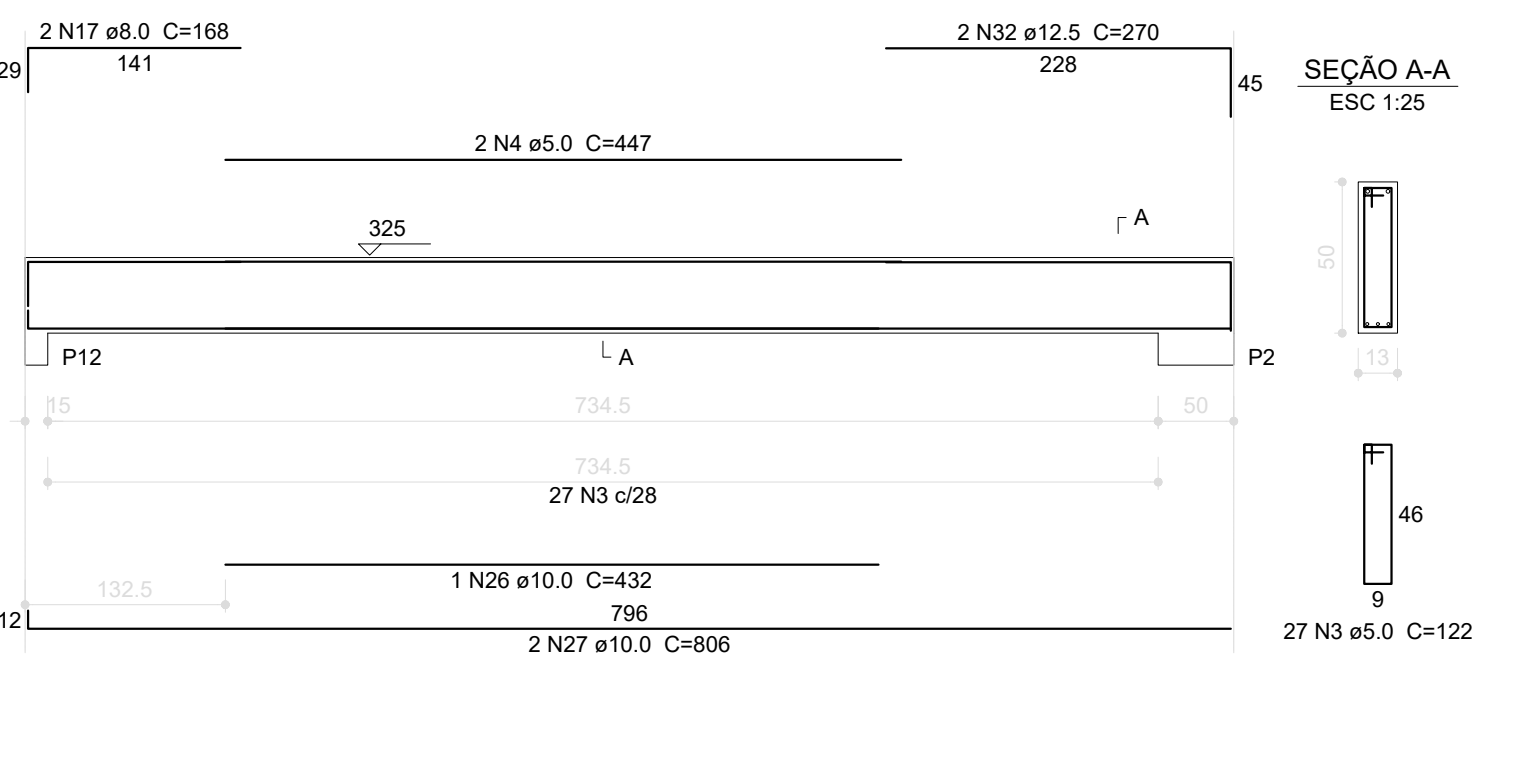
V3

ESC 1:50



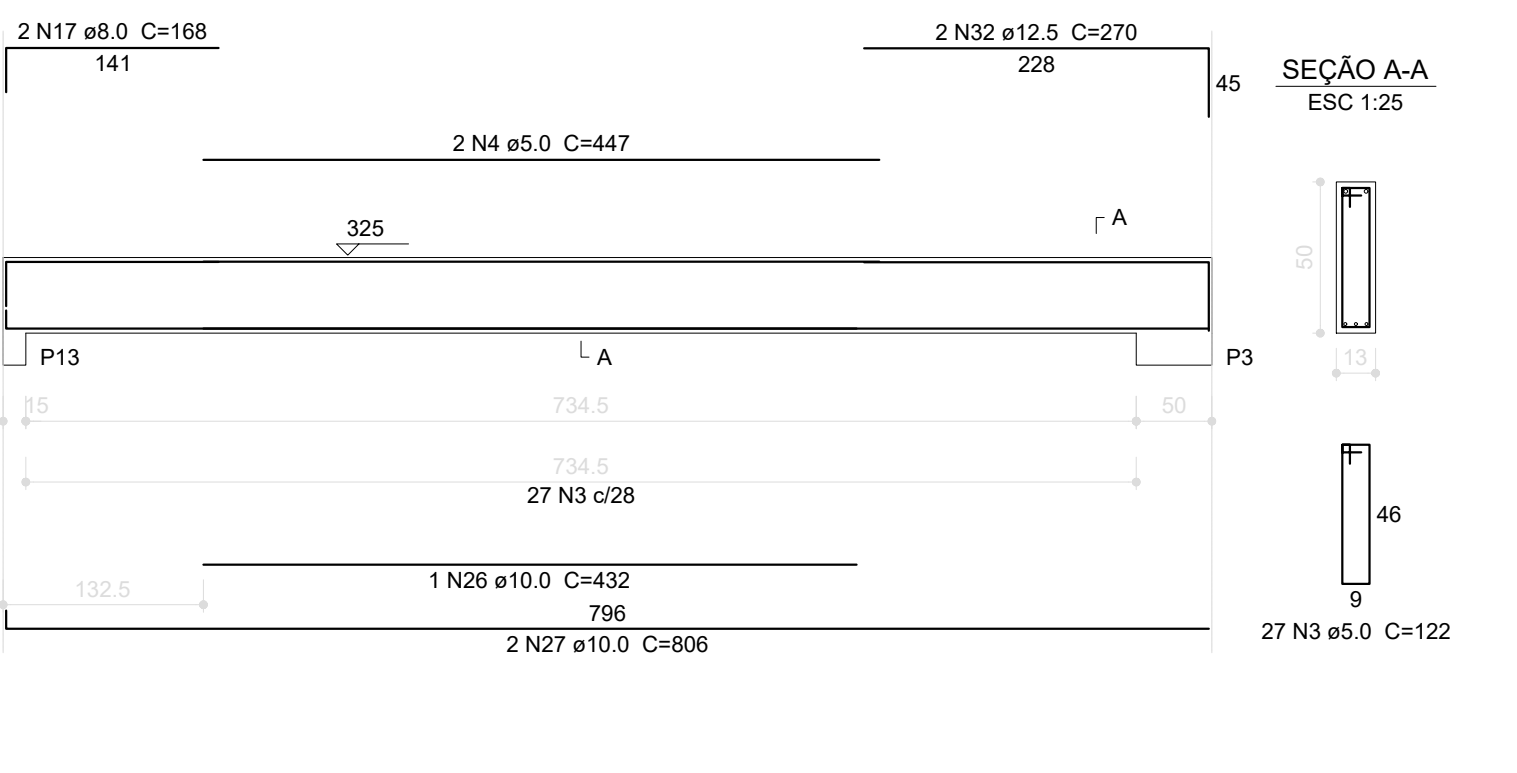
V4

ESC 1:50



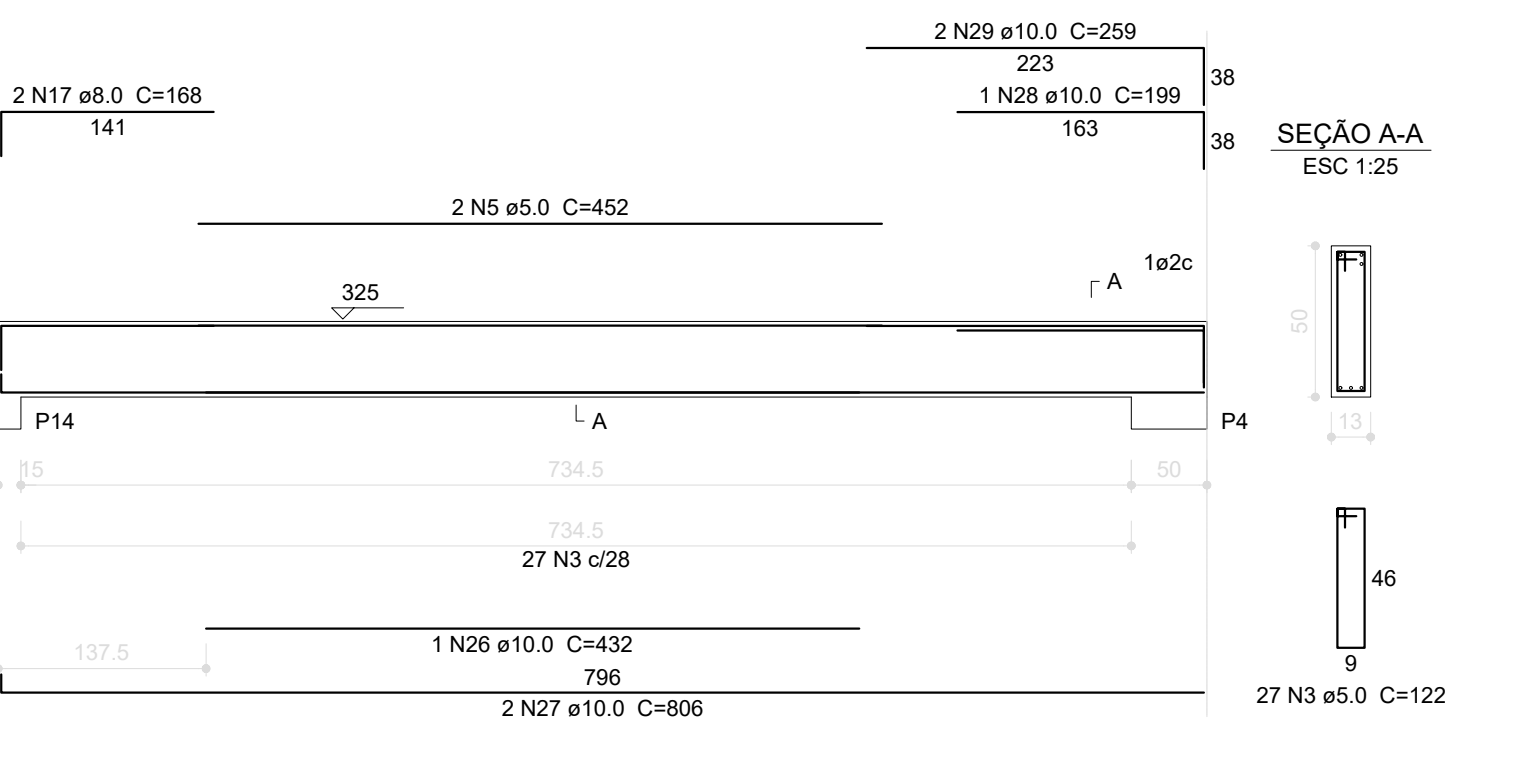
V5

ESC 1:50



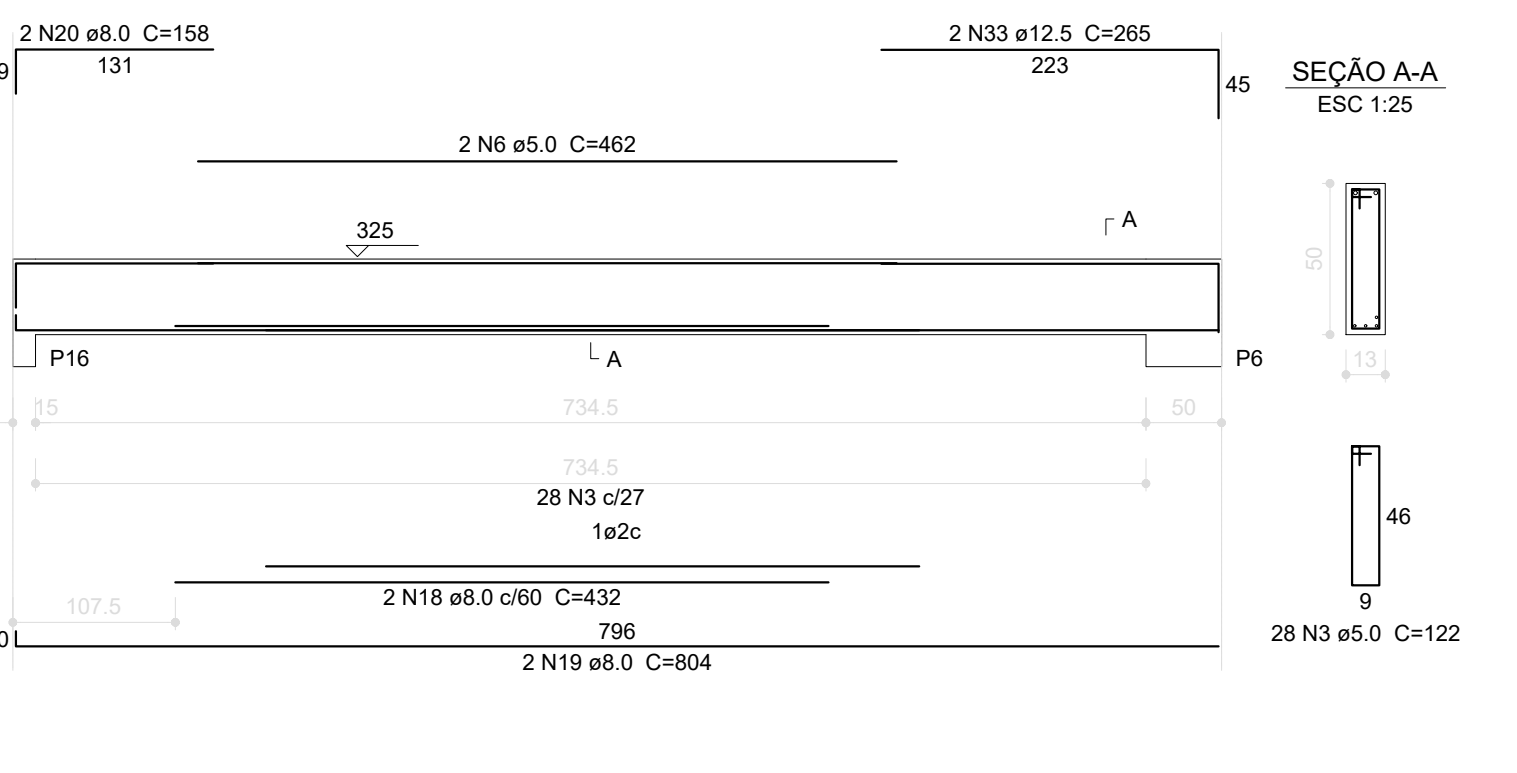
V6

ESC 1:50



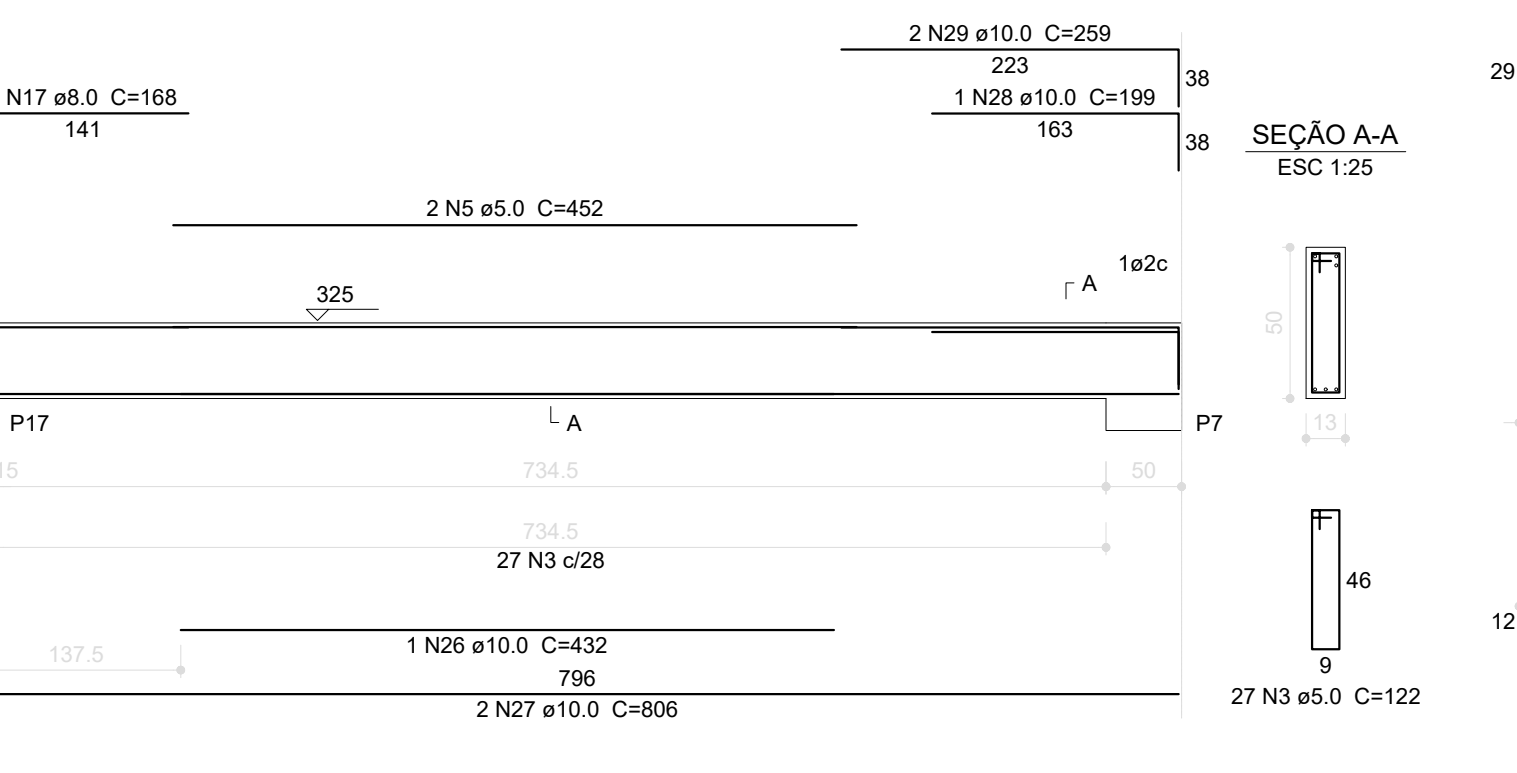
V8

ESC 1:50



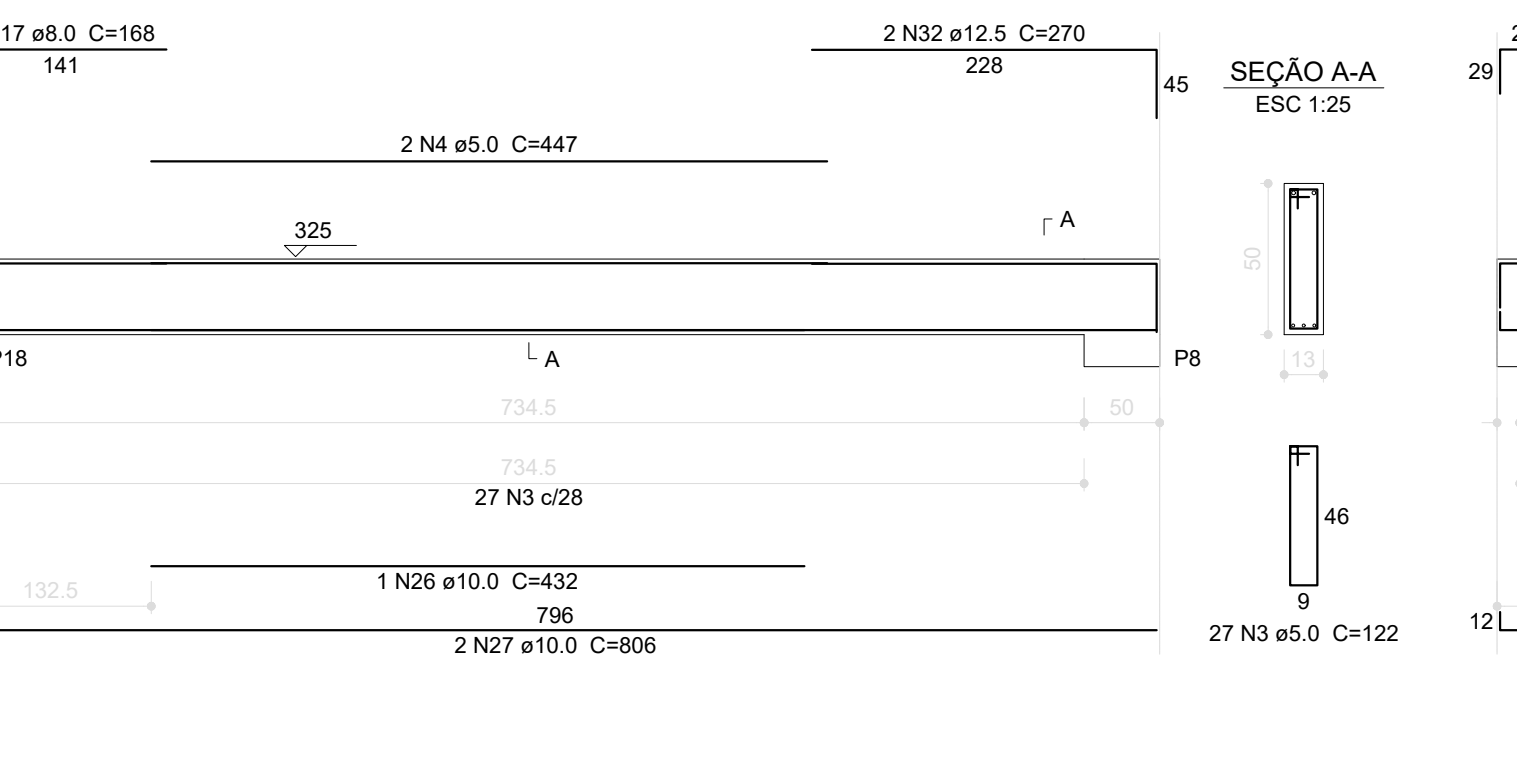
V9

ESC 1:50



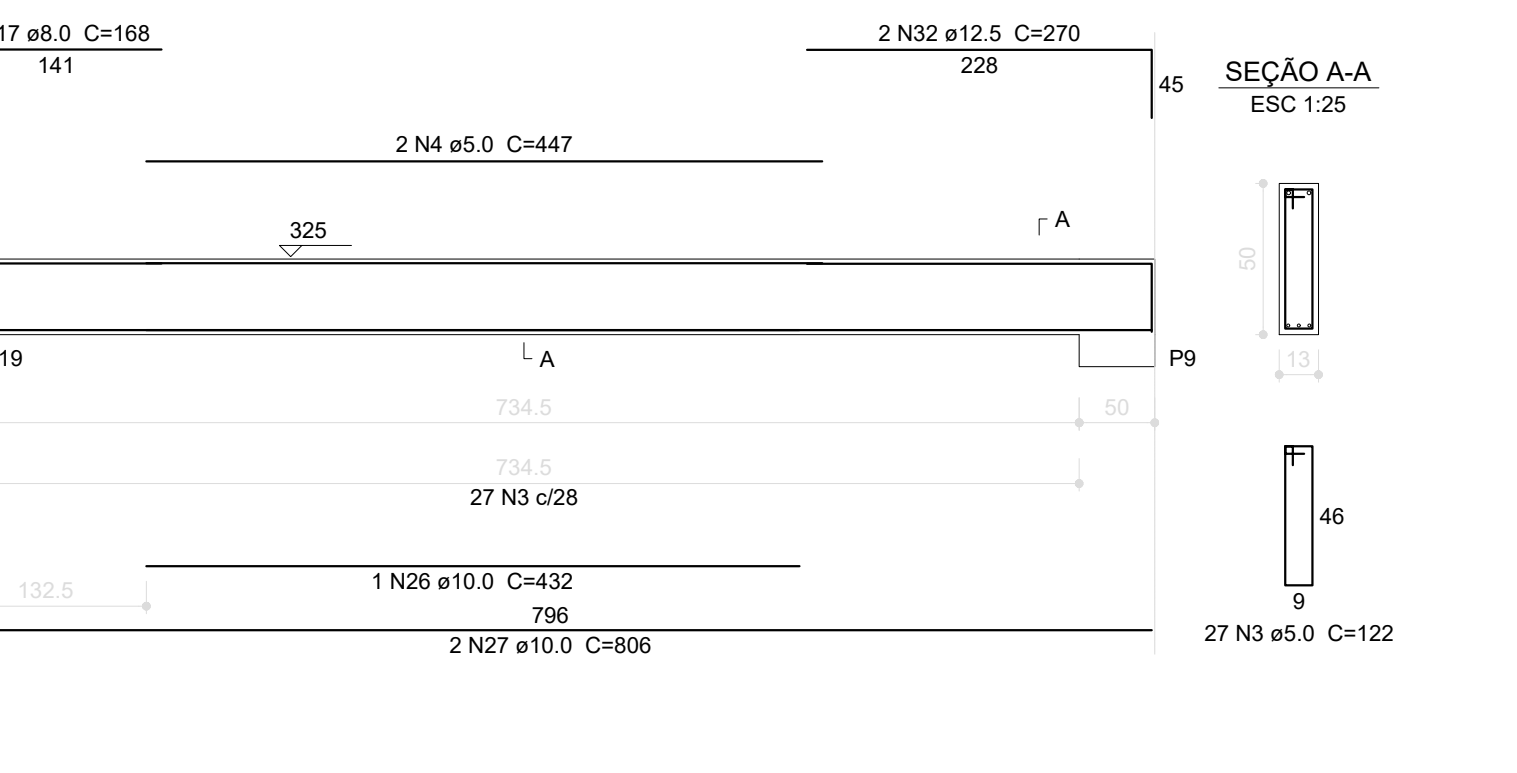
V10

ESC 1:50



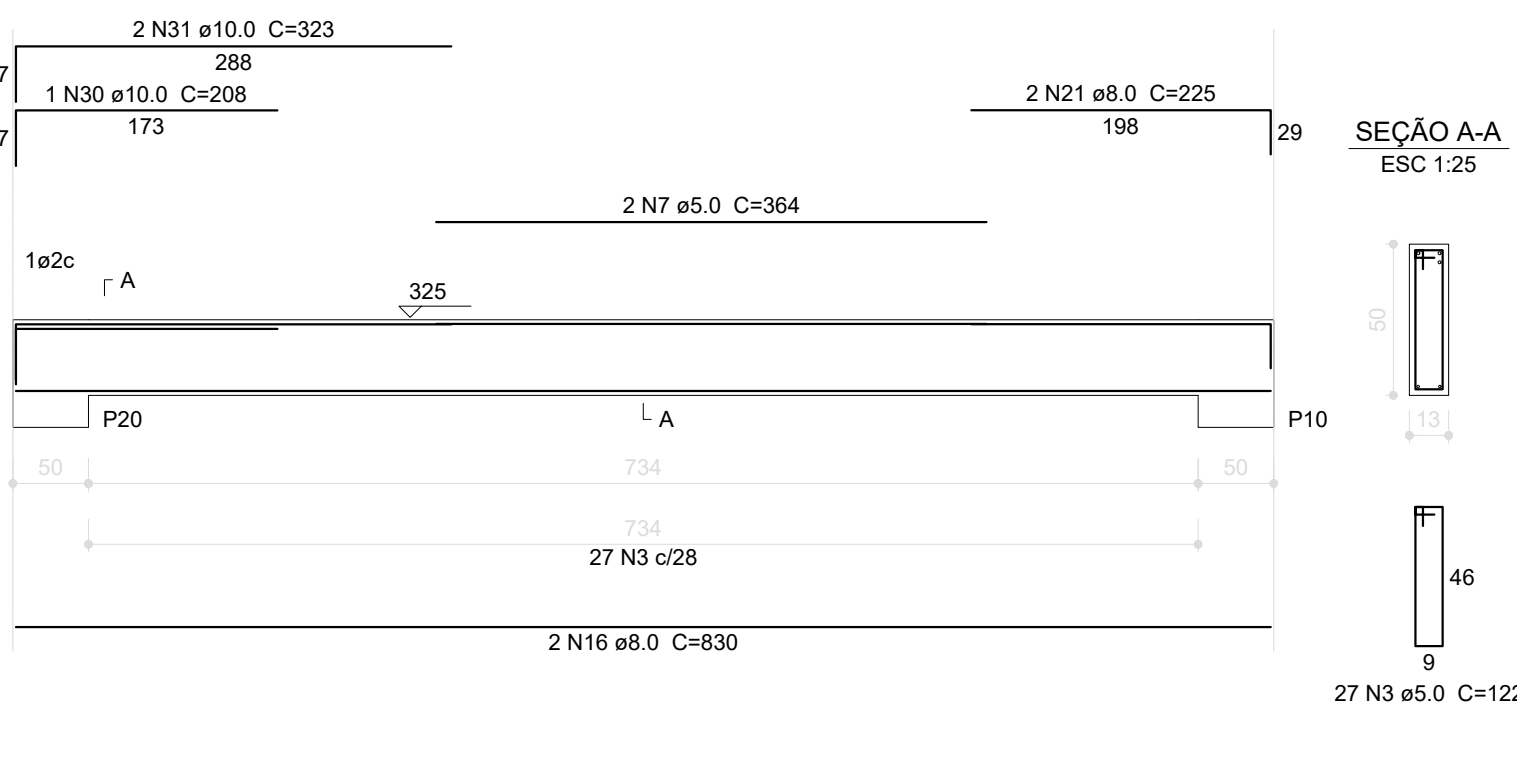
V11

ESC 1:50



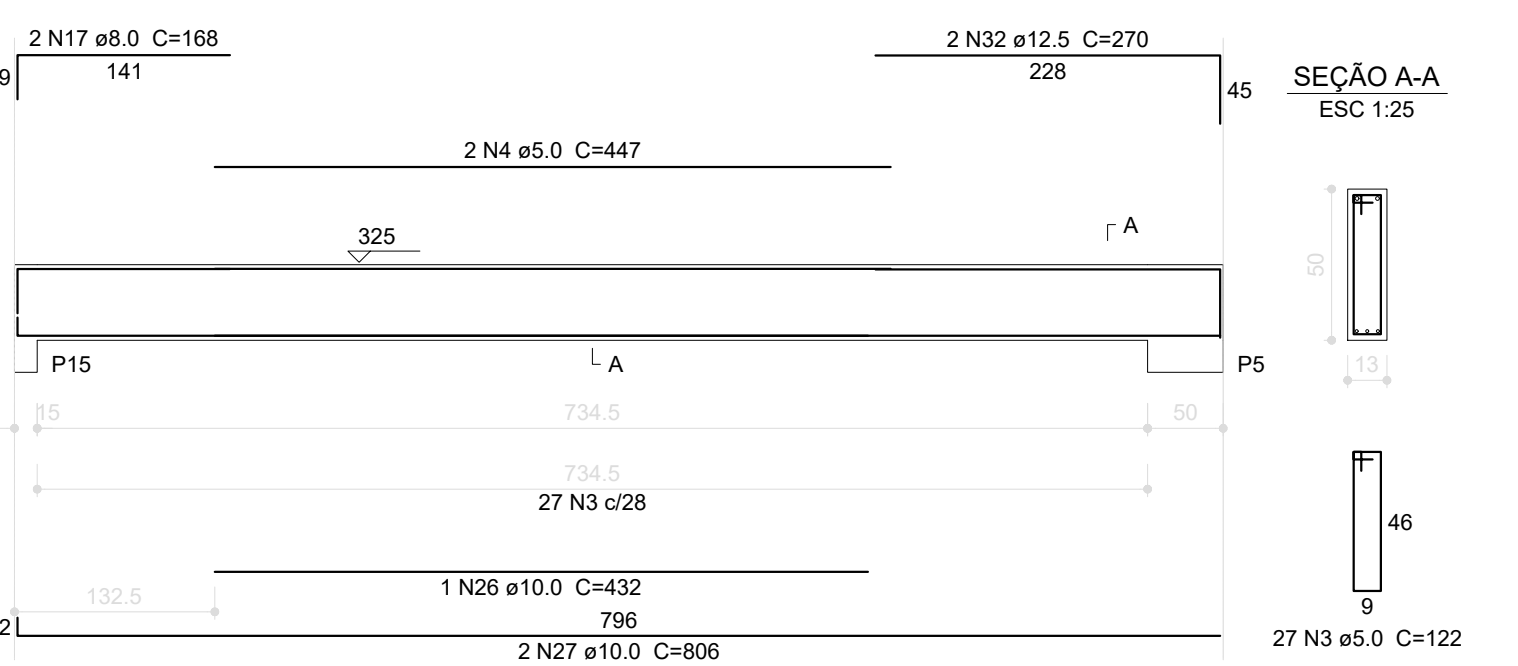
V12

ESC 1:50



V7

ESC 1:50



Resumo do aço

ACO	DIAM (mm)	C.TOTAL (m)	PESO (kg)
CA50	8.0	274.2	108.3
	10.0	181.2	111.8
	12.5	32.3	31.1
CA60	5.0	644.2	99.2
PESO TOTAL (kg)			
CA50	251.2		
CA60	99.2		

Volume de concreto (C-25) = 6.65 m³
Área de forma = 118.5 m²

1 VIGAS NÍVEL 325
ESCALA: INDICADA

PROJETO PADRÃO - FNDE			
PROPRIETÁRIO: :			
ENDEREÇO:			
MUNICÍPIO - UF:			
PROPRIETÁRIO			
RESP. TÉCNICO		CREA	
AUTOR DO PROJETO		CAU	
DILFO		CREA	
		RA	
OBSERVAÇÕES:			
ESCOLA 12 SALAS DE AULA			
PROJETO DE ESTRUTURA			
COORDENAÇÃO CGEST - Coordenação Geral de Infraestrutura Educativa		BLOCO B: PEDAGÓGICO VIGAS NÍVEL 325	
REVISÃO R.03		ESCALA INDICADA	
FORMATO (1140x594)		PRANCHAS 11/42	